

-
-
-

25-08023

Public Utilities Commission of Nevada
Electronic Filing

Submitted: 9/19/2025 1:47:54 PM

Reference: 4f9774fb-e325-48a0-8d7f-a5275eb90068

Payment Reference: a0-8d7f-a5275eb90068

Filed For: Regulatory Operations Staff

In accordance with NRS Chapter 719,
this filing has been electronically signed and filed
by: /s Mahin Quintero

By electronically filing the document(s),
the filer attests to the authenticity of the electronic signature(s) contained therein.

This filing has been electronically filed and deemed to be signed by an authorized
agent or
representative of the signer(s) and
Regulatory Operations Staff



JOE LOMBARDO
Governor

STATE OF NEVADA
PUBLIC UTILITIES COMMISSION

HAYLEY WILLIAMSON
Chair

TAMMY CORDOVA
Commissioner

RANDY J. BROWN
Commissioner

STEPHANIE MULLEN
Executive Director

September 19, 2025

Southwest Gas Corporation
8360 S Durango Dr
Las Vegas, NV 89113

RE: Docket No.: 25-08023
Southwest Gas Corporation filed Notice, under Advice Letter No. 546, to adjust Northern and Southern Nevada Base Tariff Energy Rates and Deferred Energy Account Adjustment Rates effective October 1, 2025.

To Whom It May Concern:

The Regulatory Operations Staff has reviewed and processed the tariff sheets as filed in the above referenced docket. Enclosed are copies of the tariff sheets which have been accepted for filing by the Public Utilities Commission of Nevada, effective October 1, 2025.

Sincerely,

A handwritten signature in black ink, appearing to read "Mahin Quintero".

Mahin Quintero
Operations Analyst

Enclosure(s)

cc: PUC Master File

STATEMENT OF RATES
EFFECTIVE RATES APPLICABLE TO SOUTHERN NEVADA SCHEDULES ^{1/2/}

Schedule Number	Description	Delivery Charge ^{3/}	Gas Cost		Infrastructure Expansion Rate ^{7/}	Currently Effective Tariff Rate	
			Base Tariff Energy Rate ^{4/}	Deferred Energy Account Adjustment			
SG-RS	Single-Family Residential Gas Service						
	Basic Service Charge per Month	\$ 10.80				\$ 10.80	
	Commodity Charge per Therm:						
	All Usage	\$.68757	\$.39092	(\$ 0.22500)	\$.00000	\$ 0.85349	R
SG-RM	Multi-Family Residential Gas Service						
	Basic Service Charge per Month	\$ 9.00				\$ 9.00	
	Commodity Charge per Therm:						
	All Usage	\$.64629	\$.39092	(\$ 0.22500)	\$.00000	\$ 0.81221	R
SG-RAC	Air Conditioning Residential Gas Service						
	Basic Service Charge per Month	\$ 10.80				\$ 10.80	
	Commodity Charge per Therm:						
	All Usage	\$.17805	\$.39092	(\$ 0.22500)	\$.00000	\$ 0.34397	R
SG-G1	General Gas Service - 1						
	Basic Service Charge per Month	\$ 25.80				\$ 25.80	
	Commodity Charge per Therm:						
	All Usage	\$.31482	\$.39092	(\$ 0.22500)	\$.00000	\$ 0.48074	R
SG-G2	General Gas Service - 2						
	Basic Service Charge per Month	\$ 135.00				\$ 135.00	
	Commodity Charge per Therm:						
	All Usage	\$.15399	\$.39092	(\$ 0.22500)	\$.00000	\$ 0.31991	R
SG-G3	General Gas Service - 3						
	Basic Service Charge per Month	\$ 350.00				\$ 350.00	
	Commodity Charge per Therm:						
	All Usage	\$.13459	\$.39092	(\$ 0.22500)	\$.00000	\$ 0.30051	R
SG-G4	General Gas Service - 4						
	Basic Service Charge per Month	\$1,000.00				\$1,000.00	
	Commodity Charge per Therm:						
	All Usage	\$.07276	\$.39092	(\$ 0.22500)	\$.00000	\$ 0.23868	R
	Demand Charge ^{5/}	\$.03422				\$.03422	
Issued: August 20, 2025 Effective: October 1, 2025 Advice Letter No.: 546		<div> <div>Issued by</div> <div>Amy L. Timperley</div> <div>Senior Vice President</div> </div>					<div> <div>Filing Accepted Effective</div> <div>OCT 1 2025</div> <div>Public Utilities Commission of Nevada</div> </div>

STATEMENT OF RATES
EFFECTIVE RATES APPLICABLE TO SOUTHERN NEVADA SCHEDULES ^{1/2/}

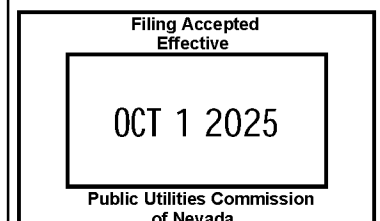
Schedule Number	Description	Delivery Charge ^{3/}	Gas Cost		Infrastructure Expansion Rate ^{7/}	Currently Effective Tariff Rate	
			Base Tariff Energy Rate ^{4/}	Deferred Energy Account Adjustment			
SG-G5	General Gas Service - 5 ^{8/}						
	Basic Service Charge per Month	\$1,000.00				\$1,000.00	
	Commodity Charge per Therm:						
	All Usage	\$.03573	\$.39092	(\$ 0.22500)	\$.00000	\$ 0.20165	R
	Demand Charge ^{5/}	\$.00373				\$.00373	
SG-G6	General Gas Service - 6 ^{8/}						
	Basic Service Charge per Month	\$1,000.00				\$1,000.00	
	Commodity Charge per Therm:						
	All Usage	\$.05863	\$.39092	(\$ 0.22500)	\$.00000	\$ 0.22455	R
	Demand Charge ^{5/}	\$.02416				\$.02416	
SG-AC	Air Conditioning Gas Service						
	Basic Service Charge per Month	\$ 25.80				\$ 25.80	
	Commodity Charge per Therm:						
	All Usage	\$.15199	\$.39092	(\$ 0.22500)	\$.00000	\$ 0.31791	R
SG-WP	Water Pumping Gas Service						
	Basic Service Charge per Month	\$ 250.00				\$ 250.00	
	Commodity Charge per Therm:						
	All Usage	\$.13287	\$.39092	(\$ 0.22500)	\$.00000	\$ 0.29879	R
SG-EG	Small Electric Generation Gas Service						
	Basic Service Charge per Month		Otherwise Applicable Rate Schedule				
	Commodity Charge per Therm:						
	All Usage	\$.09396	\$.39092	(\$ 0.22500)	\$.00000	\$ 0.25988	R

Issued:
August 20, 2025

Effective:
October 1, 2025

Advice Letter No.:
546

Issued by
Amy L. Timperley
Senior Vice President



SOUTHWEST GAS CORPORATION
P.O. Box 98510
Las Vegas, Nevada 89193-8510
Nevada Gas Tariff No. 7

Canceling 94th Revised P.U.C.N. Sheet No. 11
93rd Revised P.U.C.N. Sheet No. 11

STATEMENT OF RATES
EFFECTIVE RATES APPLICABLE TO SOUTHERN NEVADA SCHEDULES ^{1/2/}

Schedule Number	Description	Delivery Charge ^{3/}	Gas Cost		Infrastructure Expansion Rate ^{1/}	Currently Effective Tariff Rate	
			Base Tariff Energy Rate ^{4/}	Deferred Energy Account Adjustment			
SG-CNG	Gas Service for Compression on Customer's Premises ^{6/}						
	Basic Service Charge per Month	\$ 25.80				\$ 25.80	
	Commodity Charge per Therm:						
	All Usage	\$.16141	\$.39092	(\$ 0.22500)	\$.00000	\$ 0.32733	R
SG-L	Street and Outdoor Lighting Gas Service						
	Commodity Charge per Therm:						
	All Usage	\$.64895	\$.39092	(\$ 0.22500)	\$.00000	\$ 0.81487	R
SG-OS	Optional Gas Service						
						As specified on Sheet Nos. 48 through 51.	
SG-AS	Alternative Sales Service						
						As specified on Sheet Nos. 52 through 53.	
SG-CGS	Compression Gas Service						
						As specified on Sheet Nos. 47A through 47I.	
SG-RNG	Biogas and Renewable Natural Gas Service						
						As specified on Sheet Nos. 53A through 53I.	

Issued:

August 20, 2025

Effective:

October 1, 2025

Advice Letter No.:

546

Issued by
Amy L. Timperley
Senior Vice President

Filing Accepted
Effective

OCT 1 2025

Public Utilities Commission
of Nevada

STATEMENT OF RATES
EFFECTIVE RATES APPLICABLE TO SOUTHERN NEVADA SCHEDULES ^{1/2/}
(Continued)

- ^{1/} The charges shown above are subject to adjustments for taxes and assessments.
- ^{2/} Customers taking transportation service will pay the Basic Service Charge, the Delivery Charge per therm excluding the Conservation and Energy Efficiency component, and Demand Charge, if applicable, of the Currently Effective Tariff Rate for each meter included in the transportation service agreement, plus an amount for distribution system shrinkage for all quantities of gas not delivered through a direct connection to one of the Company's upstream interstate pipelines. The high pressure shrinkage rate is \$.00005 per therm, and the low pressure shrinkage rate is \$.00143 per therm. Additionally, customers will pay the Southwest Gas Transmission Company (SGTC) Annual Charge Adjustment (ACA) rate of \$.00015 per therm and the SGTC volumetric charge of \$.00145 per therm for all scheduled quantities that flow through the SGTC pipeline. The ACA Charge and volumetric charge will also apply to applicable traded and imbalance quantities. In addition, the customer will also pay a Transportation Service Charge of \$500.00 per month per individually qualifying premise. For purposes of calculating Payment for Excess Imbalances, the Imbalance Commodity Charge is \$.36084 per therm and the Imbalance Reservation Charge is \$.04361 per therm. For customers converting from sales service, an additional amount equal to the currently effective Deferred Energy Accounting Adjustment will be assessed for a period of twelve (12) months.
- ^{3/} Includes the following:

Component/Schedule	SG-RS	SG-RM	SG-RAC	SG-G1	SG-G2	SG-G3	SG-G4	SG-G5
Margin	.61631	.60822	.15847	.39922	.14999	.13503	.06949	.01615
Accumulated Deferred Interest Rate Adjustment	.01477	.01477	.01477	.01477	.01477	.01477	.01477	.01477
General Revenues Adjustment	.05168	.01849	.00000	(.10398)	(.01558)	(.02002)	(.01631)	.00000
Gas Infrastructure Replacement Rate	.00000	.00000	.00000	.00000	.00000	.00000	.00000	.00000
Conservation and Energy Efficiency	.00399	.00399	.00399	.00399	.00399	.00399	.00399	.00399
Contract Transition Adjustment Provision	.00082	.00082	.00082	.00082	.00082	.00082	.00082	.00082
Total	.68757	.64629	.17805	.31482	.15399	.13459	.07276	.03573

Component/Schedule	SG-G6	SG-AC	SG-WP	SG-EG	SG-CNG	SG-L
Margin	.03905	.13241	.11329	.07438	.14183	.62937
Accumulated Deferred Interest Rate Adjustment	.01477	.01477	.01477	.01477	.01477	.01477
General Revenues Adjustment	.00000	.00000	.00000	.00000	.00000	.00000
Gas Infrastructure Replacement Rate	.00000	.00000	.00000	.00000	.00000	.00000
Conservation and Energy Efficiency	.00399	.00399	.00399	.00399	.00399	.00399
Contract Transition Adjustment Provision	.00082	.00082	.00082	.00082	.00082	.00082
Total	.05863	.15199	.13287	.09396	.16141	.64895

- ^{4/} For all rate schedules, the Base Tariff Energy Rate (BTER) includes \$0.02852 per therm for the Unrecovered Gas Cost Expense Base Rate.
- ^{5/} The total monthly demand charge for Schedule Nos. SG-G4, SG-G5, and SG-G6 is equal to the unit rate shown multiplied by the customer's billing determinant.
- ^{6/} The charges for Schedule No. SG-CNG are subject to adjustments for applicable state and federal taxes on fuel used in motor vehicles.
- ^{7/} In addition to all other rates in this Statement of Rates, all customers in the Mesquite Expansion Area will pay a rate of \$0.05000 per therm as part of their Infrastructure Expansion Rate.
- ^{8/} The maximum and minimum rates for Schedule Nos. SG-G5 and SG-G6 are set forth below.

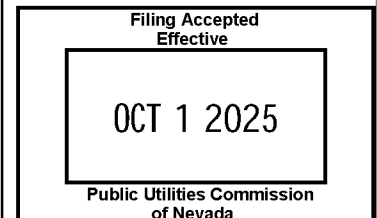
SG-G5	Minimum Rates	Maximum Rates	SG-G6	Minimum Rates	Maximum Rates
Basic Service Charge	\$1,000.00	Effective tariff rates	Basic Service Charge	\$1,000.00	Effective tariff rates
Transportation Charge	\$500.00		Transportation Charge	\$500.00	
Demand Charge	\$0.00186		Demand Charge	\$0.01208	
Margin	\$0.00779		Margin	\$0.01924	

Issued:
August 20, 2025

Effective:
October 1, 2025

Advice Letter No.:
546

Issued by
Amy L. Timperley
Senior Vice President



SOUTHWEST GAS CORPORATION

P.O. Box 98510

Las Vegas, Nevada 89193-8510

Nevada Gas Tariff No. 7

Canceling

93rd Revised

92nd Revised

P.U.C.N. Sheet No.

12

P.U.C.N. Sheet No.

12

STATEMENT OF RATES

EFFECTIVE RATES APPLICABLE TO NORTHERN NEVADA SCHEDULES ^{1/2/8}

Schedule Number	Description	Delivery Charge ^{3/}	Gas Cost		Infrastructure Expansion Rate ^{9/}	Currently Effective Tariff Rate	
			Base Tariff Energy Rate ^{4/}	Deferred Energy Account Adjustment			
NG-RS	Single-Family Residential Gas Service						
	Basic Service Charge per Month	\$ 10.80				\$ 10.80	
	Commodity Charge per Therm:						
	All Usage	\$.45157	\$ 0.68390	(\$.27500)	\$.01653	\$ 0.87700	R
NG-RM	Multi-Family Residential Gas Service						
	Basic Service Charge per Month	\$ 10.80				\$ 10.80	
	Commodity Charge per Therm:						
	All Usage	\$.43459	\$ 0.68390	(\$.27500)	\$.01653	\$ 0.86002	R
NG-RAC	Air Conditioning Residential Gas Service						
	Basic Service Charge per Month	\$ 10.80				\$ 10.80	
	Commodity Charge per Therm:						
	All Usage	\$.52597	\$ 0.68390	(\$.27500)	\$.01653	\$ 0.95140	R
NG-G1	General Gas Service - 1						
	Basic Service Charge per Month	\$ 28.80				\$ 28.80	
	Commodity Charge per Therm:						
	All Usage	\$.31699	\$ 0.68390	(\$.27500)	\$.01653	\$ 0.74242	R
NG-G2	General Gas Service - 2						
	Basic Service Charge per Month	\$ 135.00				\$ 135.00	
	Commodity Charge per Therm:						
	All Usage	\$.13058	\$ 0.68390	(\$.27500)	\$.01653	\$ 0.55601	R
NG-G3	General Gas Service - 3						
	Basic Service Charge per Month	\$ 350.00				\$ 350.00	
	Commodity Charge per Therm:						
	All Usage	\$.13881	\$ 0.68390	(\$.27500)	\$.01653	\$ 0.56424	R
NG-G4	General Gas Service - 4						
	Basic Service Charge per Month	\$1,000.00				\$1,000.00	
	Commodity Charge per Therm:						
	All Usage	\$.06791	\$ 0.68390	(\$.27500)	\$.01653	\$ 0.49334	R
	Demand Charge ^{5/}	\$.01588				\$.01588	
NG-G5	General Gas Service - 5 ^{7/}						
	Basic Service Charge per Month	\$1,000.00				\$1,000.00	
	Commodity Charge per Therm:						
	All Usage	\$.03225	\$ 0.68390	(\$.27500)	\$.01653	\$ 0.45768	R
	Demand Charge ^{5/}	\$.01833				\$.01833	

Issued:

August 20, 2025

Effective:

October 1, 2025

Advice Letter No.:

546

Issued by
Amy L. Timperley
Senior Vice President

Filing Accepted
Effective

OCT 1 2025

Public Utilities Commission
of Nevada

STATEMENT OF RATES
EFFECTIVE RATES APPLICABLE TO NORTHERN NEVADA SCHEDULES ^{1/2/8}

Schedule Number	Description	Delivery Charge ^{3/}	Gas Cost		Infrastructure Expansion Rate ^{9/}	Currently Effective Tariff Rate	
			Base Tariff Energy Rate ^{4/}	Deferred Energy Account Adjustment			
NG-AC	Air Conditioning Gas Service						
	Basic Service Charge per Month	\$ 28.80				\$ 28.80	
	Commodity Charge per Therm:						
	All Usage	\$.13326	\$ 0.68390	(\$.27500)	\$.01653	\$ 0.55869	R
NG-WP	Water Pumping Gas Service						
	Basic Service Charge per Month	\$ 36.00				\$ 36.00	
	Commodity Charge per Therm:						
	All Usage	\$.17694	\$ 0.68390	(\$.27500)	\$.01653	\$ 0.60237	R
NG-EG	Small Electric Generation Gas						
	Basic Service Charge per Month	Otherwise Applicable Rate Schedule					
	Commodity Charge per Therm:						
	All Usage	\$.08467	\$ 0.68390	(\$.27500)	\$.01653	\$ 0.51010	R
NG-CNG	Gas Service for Compression on Customer's Premises ^{6/}						
	Basic Service Charge	\$ 25.80				\$ 25.80	
	Commodity Charge per Therm:						
	All Usage	\$ 1.22859	\$ 0.68390	(\$.27500)	\$.01653	\$ 1.65402	R
NG-L	Street and Outdoor Lighting Gas Service						
	Commodity Charge per Therm:						
	All Usage	\$.66515	\$ 0.68390	(\$.27500)	\$.01653	\$ 1.09058	R
NG-OS	Optional Gas Service						
		As specified on Sheet Nos. 48 through 51.					
NG-AS	Alternative Sales Service						
		As specified on Sheet Nos. 52 through 53.					
NG-CGS	Compression Gas Service						
		As specified on Sheet Nos. 47A through 47I.					
NG-RNG	Biogas and Renewable Natural Gas Service						
		As specified on Sheet Nos. 53A through 53I.					

Issued:
August 20, 2025

Effective:
October 1, 2025

Advice Letter No.:
546

Issued by
Amy L. Timperley
Senior Vice President

